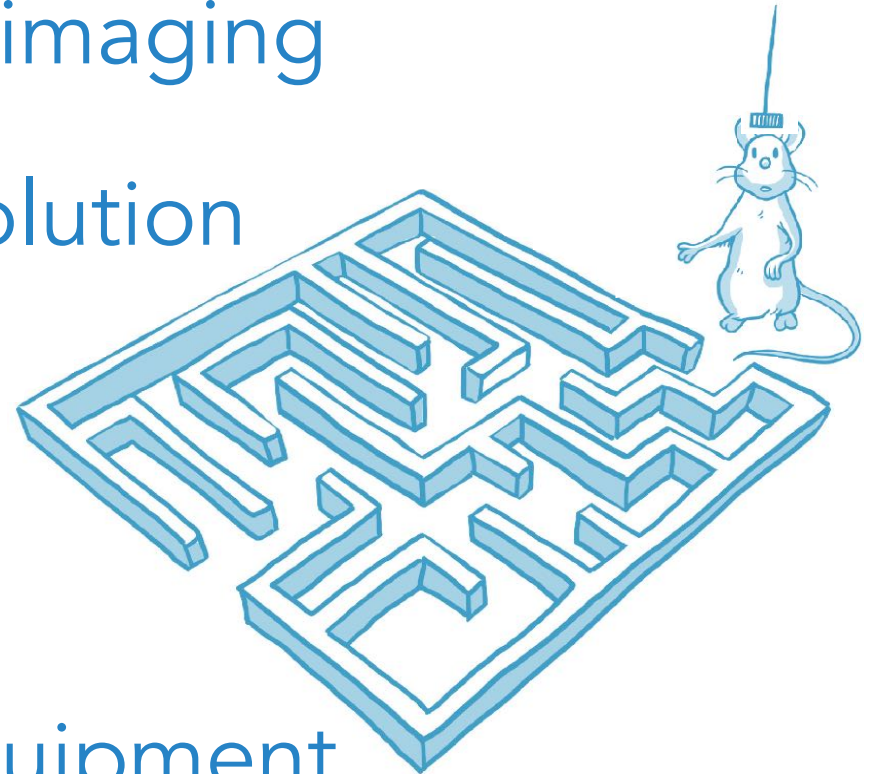


Neurofunctional imaging for research

- In vivo & awake functional imaging
- High sensitivity & high resolution
- Real time & interactive
- Easy to use & time saving
- « Bench top » & mobile equipment



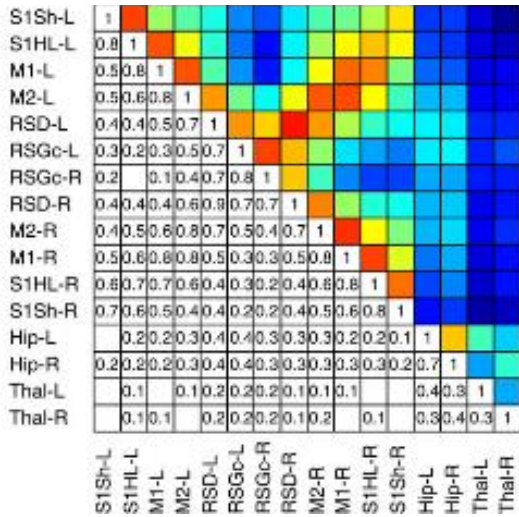
Acquisition features

- Better **Spatial resolution** than best fMRI:
100x100x400 μm
- Functional imaging and cerebral connectivity mapping based on the neurovascular coupling, **similarly to fMRI**
- Temporal sampling time down to 1ms with **unlimited acquisition time**
- Anaesthetised or awake animals using a portable ultralight probe

Easy, fast, flexible

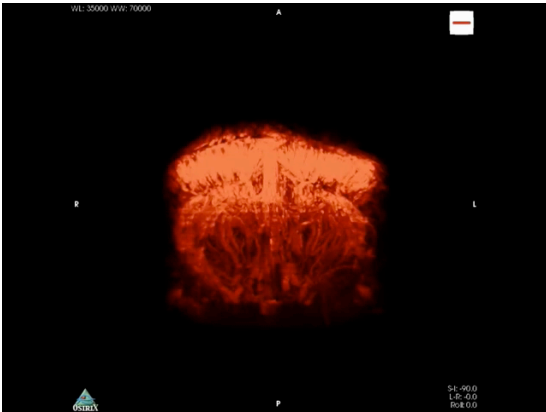
- **Mobile** system, fitting under standard lab bench
- **Automatic** probe positioning and acquisition process
- **Accessible to anyone**: No need for imaging skills, No post processing
- **No additional costs**, no maintenance, no magnetic compatibility issues.
- **Multimodal imaging** compatibility (EEG, PET ...)



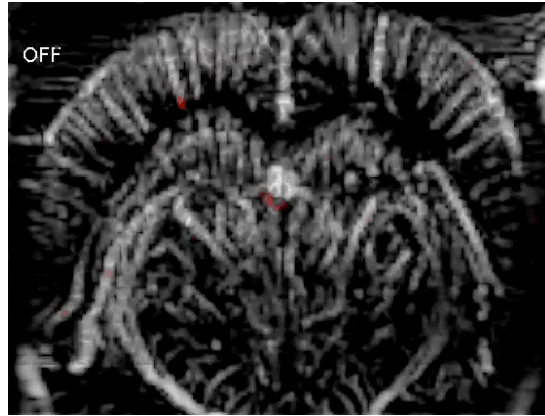


Connectivity pattern

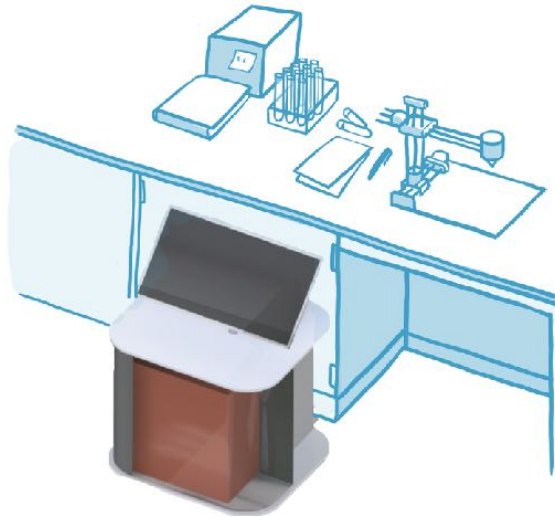
Statistics and reporting tools



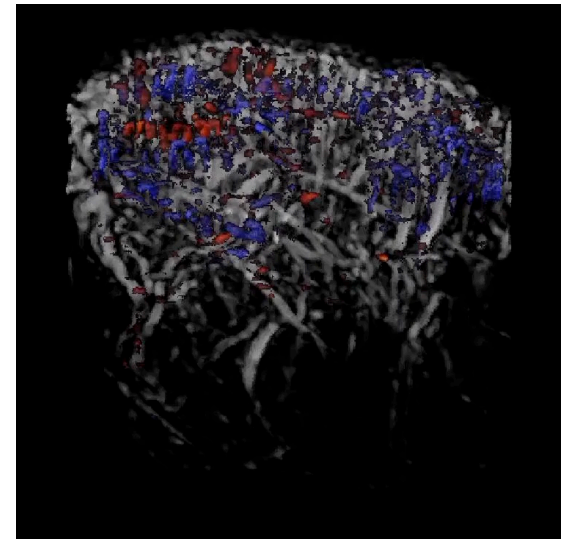
Automatic Neuro- navigation tool



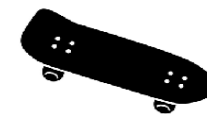
HD functional imaging



Anaesthetised or awake animals



3D / 4D imaging



Easy to move

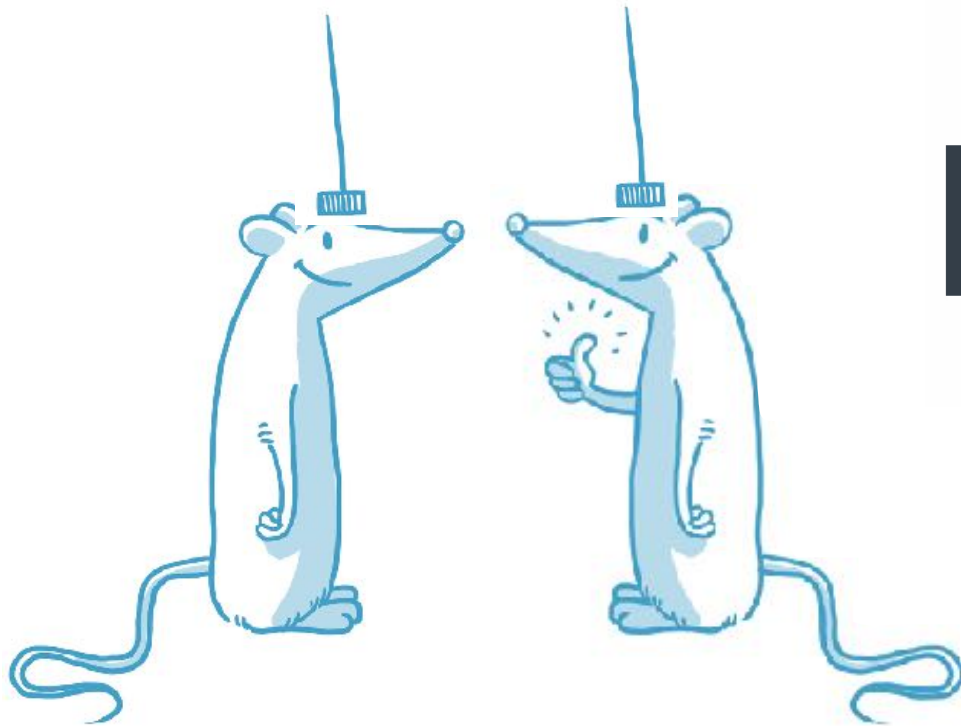


No post processing & ease of use



Iconeus

REVEALING THE BRAIN



www.iconeus.com

ludovic.lecointre@iconeus.com



With the courtesy of Inserm, CNRS, ESPCI, Institut Langevin